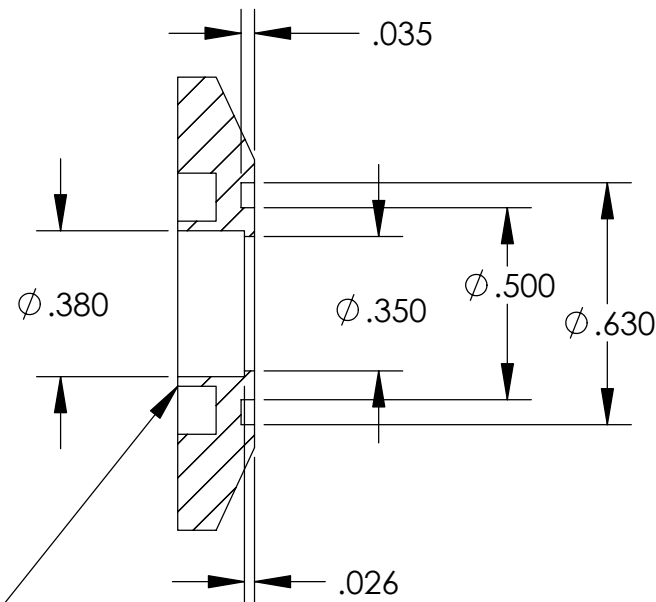
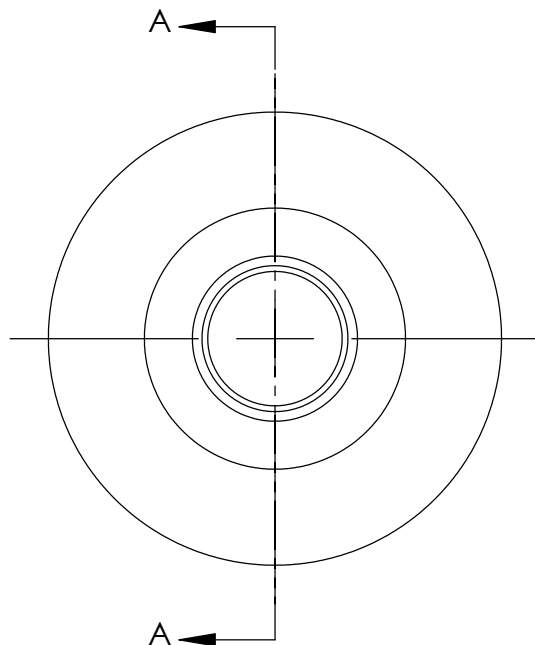
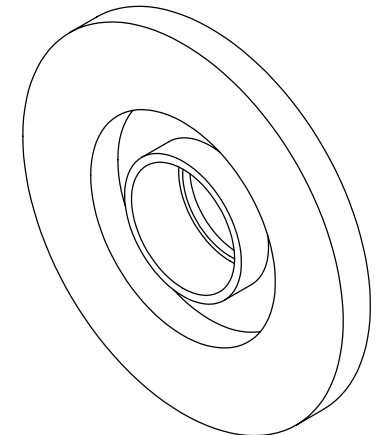


REVISIONS		
REV	DESCRIPTION	DATE



SECTION A-A



THIS WALL CAN BE REMOVED  
DOWN TO THE BOTTOM OF THE  
CENTERING RING WELL.

- NOTES:  
1. MAKE FROM MDC # 712000.  
2. .630 DIA TO FIT P/N -104.  
3. .380 DIA TO FIT P/N -113.

**UNLESS OTHERWISE SPECIFIED:**

DIMENSIONS ARE IN INCHES  
DECIMAL TOLERANCES:  
.X  $\pm .030$  .XX  $\pm .015$  .XXX  $\pm .005$

ANGULAR TOL:  $\pm 1^\circ$  SURFACE ROUGHNESS:  $63 \sqrt{}$

INTERNAL AND EXTERNAL SURFACE  
INTERSECTIONS SHALL BE UNIFORMLY  
FINISHED WITH CHAMFER .005/.010 X  $45^\circ$   
OR RADIUS .005/.010.  
CHAMFER ALL THREADED HOLES  $110^\circ$  OF  
MAJOR DIAMETER X  $45^\circ$

MATERIAL: -

FINISH: N/A

## High Precision Devices

1668 Valtac Lane, Suite C, Boulder, Colorado 80301  
Phone: (303) 447-2558 Fax: (303) 447-2548 Web Site: www.hpd-online.com

TITLE: **p02101-106 flange, NW16**

CONFIGURATION: **00-Default**

SIZE	QTY PER ASSM:	SCALE:	SHEET	OF	REV
<b>A</b>	<b>1</b>	<b>2:1</b>	<b>1</b>	<b>1</b>	<b>A</b>
DATE:	<b>5/20/2004</b>	DRAWN BY:	<b>C. Danaher</b>		